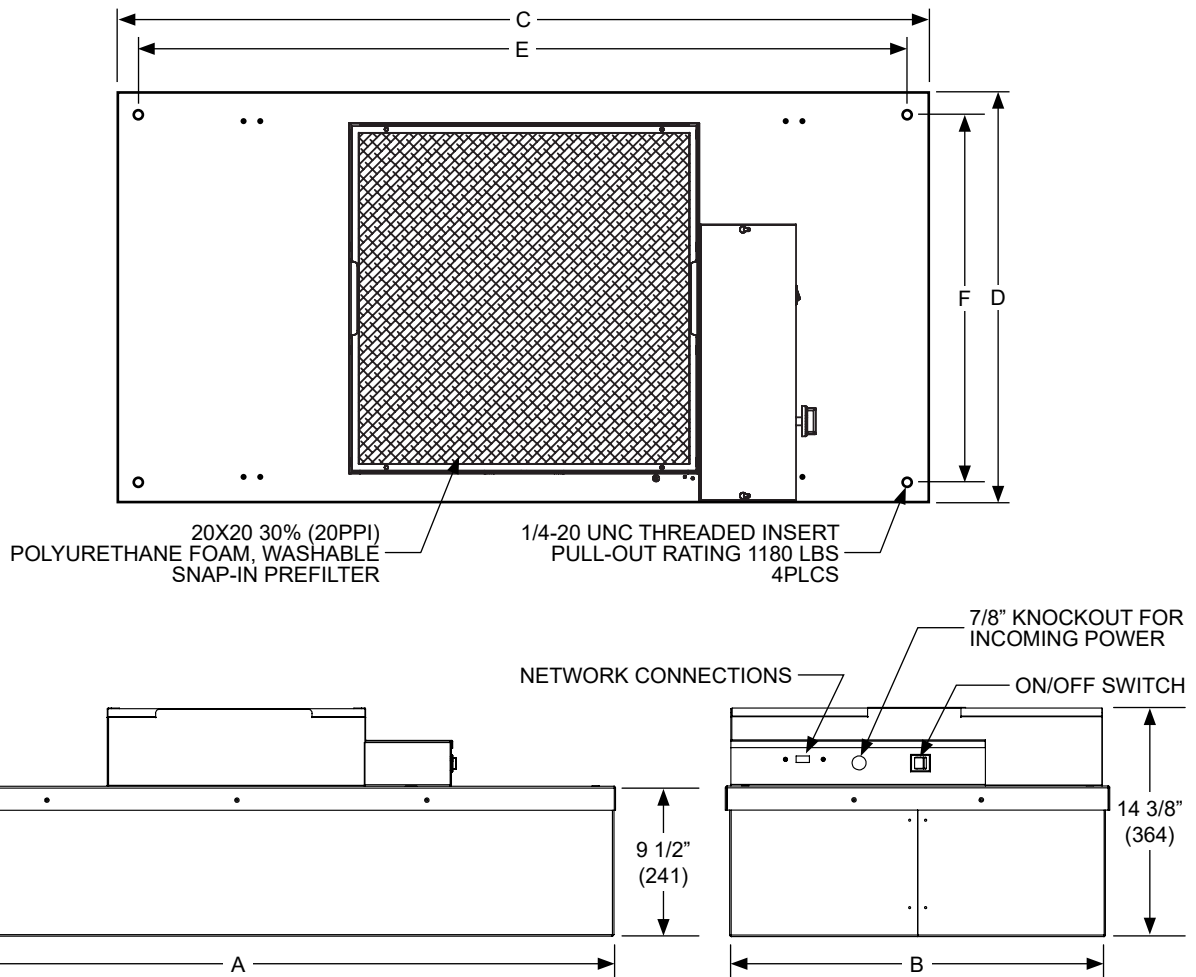


FFDB • Fan Filter Diffusers • ECM Motor • Backward Inclined Fan



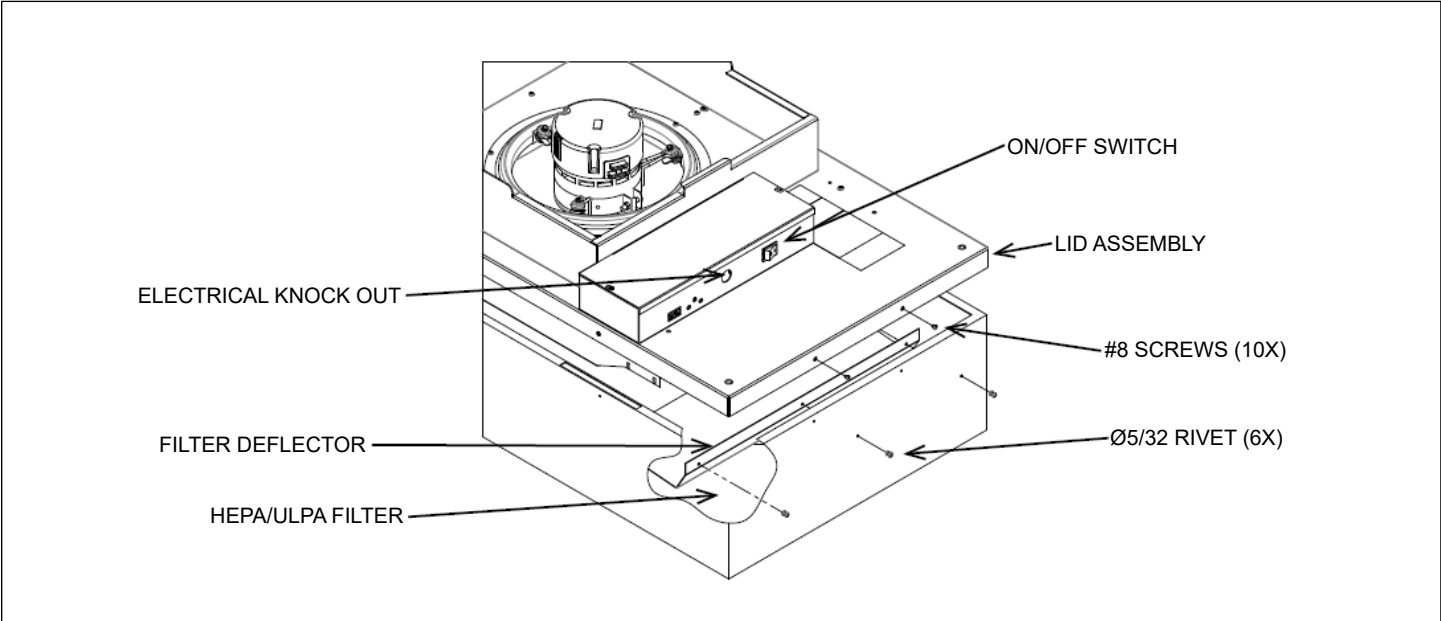
| Unit Sizez | A | B | C | D | E | F |
|------------|---------|---------|---------|---------|---------|---------|
| | In (mm) | In (mm) | In (mm) | In (mm) | In (mm) | In (mm) |
| 24" X 24" | 23 5/8 | 23 5/8 | 23 3/8 | 23 3/8 | 21 3/8 | 21 3/8 |
| | (600) | (600) | (606) | (606) | (543) | (543) |
| 36" X 24" | 35 5/8 | 23 5/8 | 35 3/8 | 23 3/8 | 33 3/8 | 21 3/8 |
| | (905) | (600) | (905) | (606) | (847) | (543) |
| 48" X 24" | 47 5/8 | 23 5/8 | 47 3/8 | 23 3/8 | 45 3/8 | 21 3/8 |
| | (1200) | (600) | (1215) | (606) | (1152) | (543) |

Note: Maximum inlet static pressure is 0.30 inches of water. Operating above the maximum may adversely affect the performance of the unit and is not recommended.

General Description

- Titus Fan Filter Diffusers provide constant unidirectional airflow to occupied space
- FFDB offers high performance, low energy usage & low noise levels for use in cleanroom applications
- Low profile design is great for applications with limited ceiling plenum space
- Walkable plenum (excluding pre-filter), rated at 250 lbs
- EC motor with universal control card
- Backward curved centrifugal fan
- Snap-in prefilter allows for easy replacement and maintenance
- Tested to IEST recommended standards
- UL 507 Listed with standard UL 900 filters

HEPA filter, Pre-filter & Lid assembly



Basic Unit Configuration

Check ☒ if provided.

Module Size

- ☐ 24" x 24"
- ☐ 36" x 24"
- ☐ 48" x 24"

Duct Collar

- ☐ None
- ☐ 10" Inlet (Shipped Loose)
- ☐ 12" Inlet (Shipped Loose)

Unit Construction

- ☐ Aluminum Face & Plenum
- ☐ Stainless Steel Face / Aluminum Plenum
- ☐ Stainless Steel Face & Plenum

Finish

- ☐ #04 Mill Finish
- ☐ #26 White

Motor Type

- ☐ 115V/ 60 Hz/ 1 Phase ; FLA = 5.0A
- ☐ 208-240V/ 50/60 Hz/ 1 Phase ; FLA = 3.0A
- ☐ 277V/ 60 Hz/ 1 Phase ; FLA = 2.5A

Control Type

- ☐ Universal Control Card
 - Constant Torque (Standard)
- ☐ Remote Mounted VCU Control
 - Must order 11166-001 separately
 - Each unit requires qty 1 for control
- ☐ Infrared Speed Controller
 - Remote PN 63760 sold separately
 - Required qty 1 to adjust airflow on multiple units

Filter Type

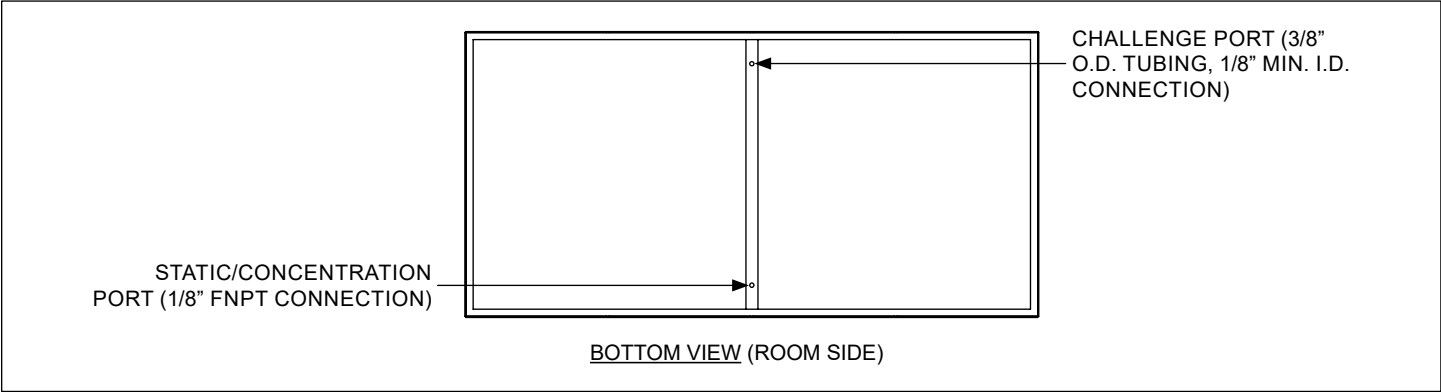
- ☐ HEPA (99.99%@0.3 micron)
- ☐ ULPA (99.9995%@0.12 micron)

Accessories (Optional)

Check ☒ if provided.

- ☐ Aerosol Challenge Port
- ☐ Surface Mount Adapter
- ☐ Insulation
- ☐ Continuous Filter Monitoring (0-10 V signal)

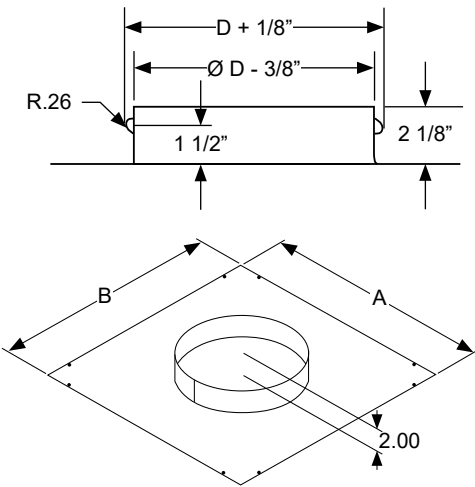
Challenge/Concentration Port Detail



Inlet Adapter Accessory Detail

Duct Collar Dimensions

| Model | Dim A | Dim B | Diameter | Unit Size | Part Number |
|---------|--------|-------|----------|-----------|-------------|
| FFDBR/A | 23.25" | 16" | 10" | 2X2 | 10691 |
| FFDBR/A | 23.25" | 16" | 12" | 2X2 | 10789 |
| FFDBR/A | 20" | 20" | 10" | 2X4 | 11231-001 |
| FFDBR/A | 20" | 20" | 12" | 2X4 | 11231-002 |



Surface Mount Adapter Accessory Detail

